

Wiki Installation Guide 2013

Guide to installing the BlueBridge Wiki Extensions for Microsoft SharePoint 2013

Table Of Contents

1. BlueBridge Wiki Extensions Installation Guide	3
2. Installation	4
2.1 Preparing the Installation	5
2.2 Installation Wizard	6
2.3 Installation via PowerShell	14
2.4 License Key	17
2.5 Preparation for Import	19
2.6 Adding your Logo to Exports	22
2.7 Wiki Webparts	23
3. Upgrade	24
3.1 Upgrade Solution	25
3.2 Upgrading to SP 2013	26
4. Uninstalling	28
4.1 Using the Wizard	29
4.2 Using the Central Administration	30
5. Activation	34
5.1 Site Features	35
5.2 Site Collection Features	37
6. Help and Support	39
6.1 Release Notes	40

1. BlueBridge Wiki Extensions Installation Guide

BlueBridge Wiki Extensions for Microsoft SharePoint 2013

Installation Guide

BlueBridge Technologies AG
Stockgasse 11

96155 Buttenheim

Germany

<http://wiki.bluebridge.de>

This document describes the steps for installing the BlueBridge Wiki Extensions for Microsoft SharePoint.

Let's move on to [Preparing the Installation](#).

Please note:

If you are migrating from an earlier version of SharePoint, then please read this information first: [Upgrading to SharePoint 2013](#).

By the way, you can also download this installation guide in PDF format:



2. Installation

Installation

The Wiki Extensions are provided as a SharePoint solution. An [Installation Wizard](#) will guide you through the installation process, or alternatively you can install the solution manually on the server.

In most cases, we recommend using the wizard, but if you would prefer to install manually, then please read these notes [Installation via PowerShell](#).

2.1 Preparing the Installation

Preparing the Installation

The BlueBridge Wiki Extensions for Microsoft SharePoint should be installed directly on the server that is running SharePoint. The solution works on all on-premise versions of SharePoint 2013: Foundation, Standard and Enterprise. The Wiki Extensions are not compatible with Office 365.

Note: The Wiki Extensions require a valid License Key to run, even in trial mode. A 30 day trial key should, however, be automatically installed if you follow the steps in this installation guide.

If you want to use the function “Add From Template”, you must manually edit the web.config. However, this can be done at a later date.

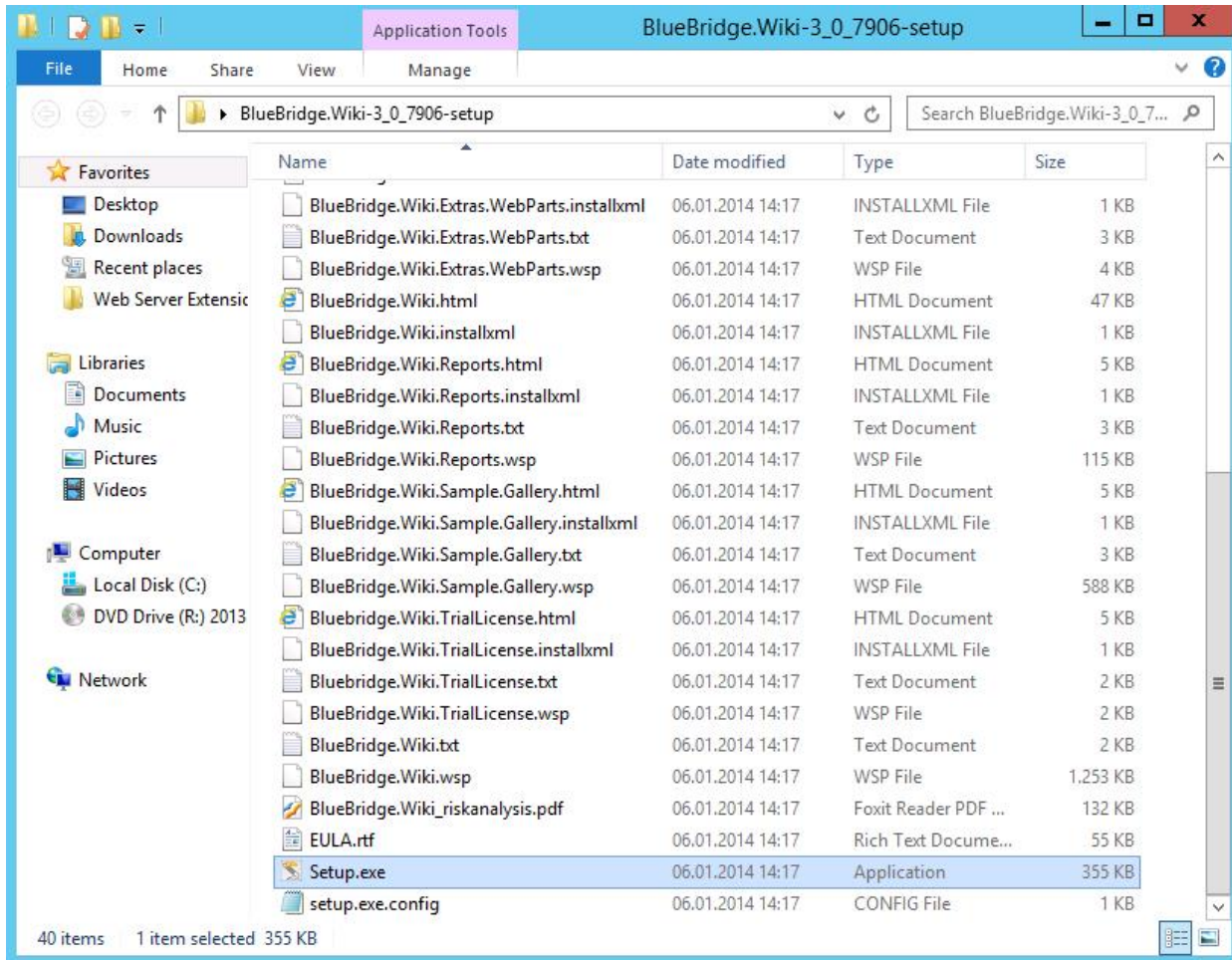
The first thing to do is to download a copy of the latest version of the Wiki Extensions from our website www.bluebridge.de/products/wiki. Make sure you save this on your server's hard drive and unzip it before proceeding.

The next step: Installation

2.2 Installation Wizard

Installation Wizard

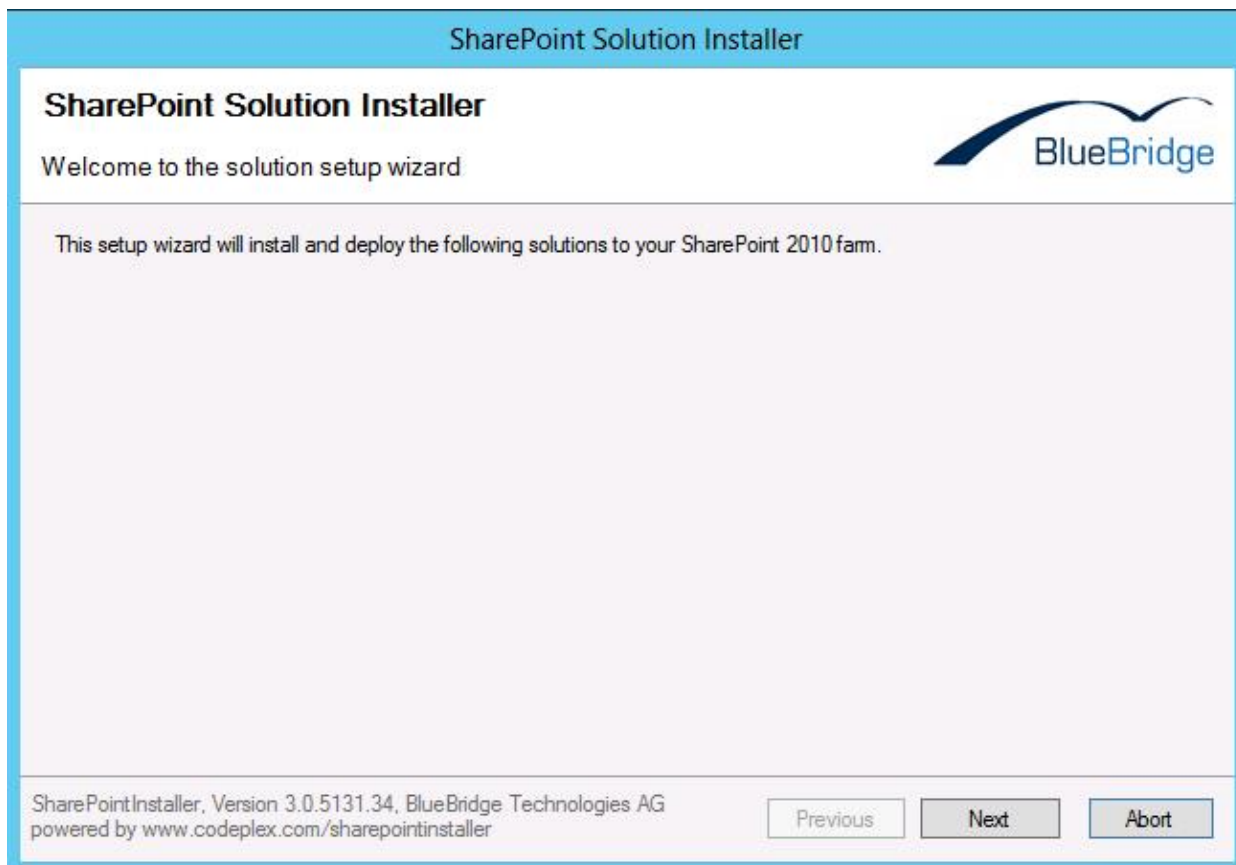
Before you install, unzip the installation package (zip file) to your server's local hard drive.



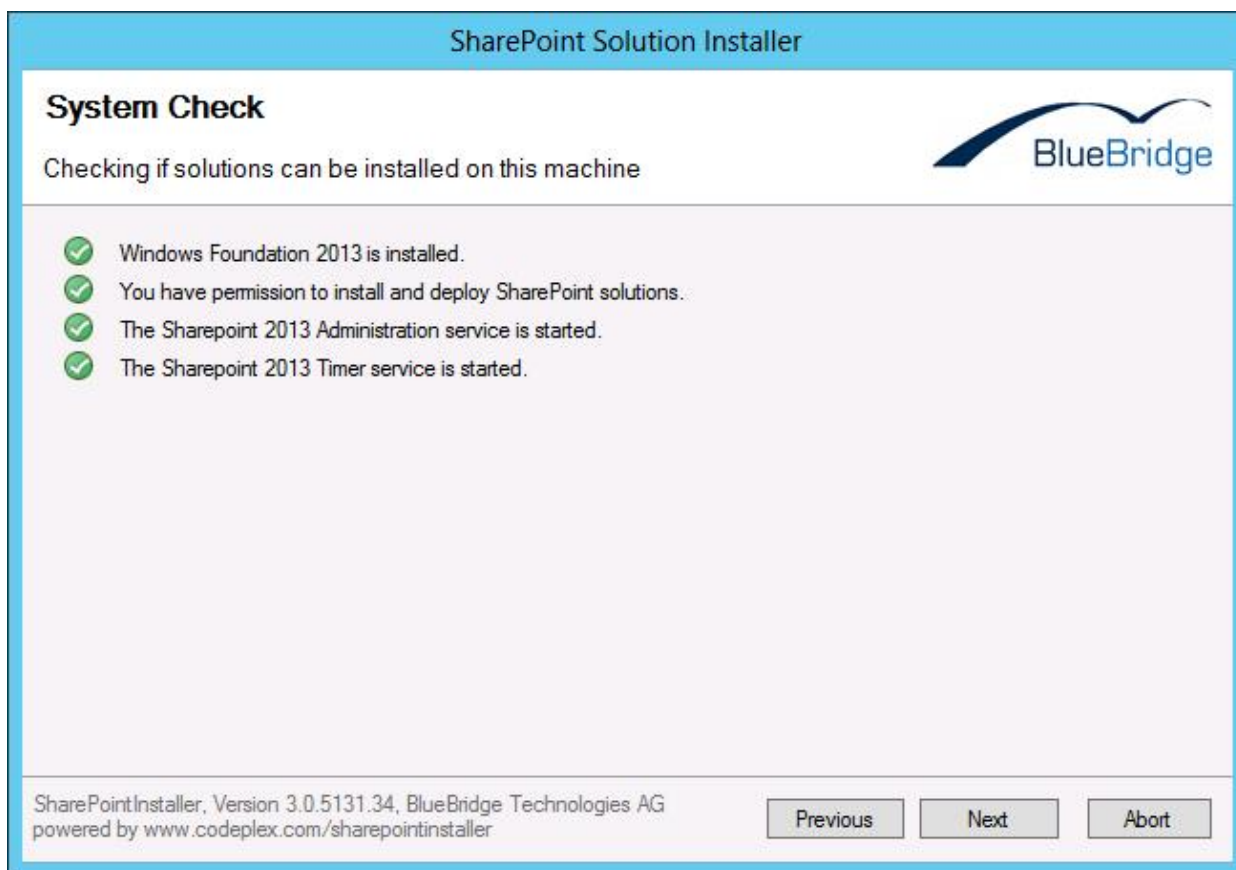
Note: Do not start the setup from a network drive (fileshare).

Start installation

Start the installation with "setup.exe". In some configurations, you may have to right-click and select "run as administrator".

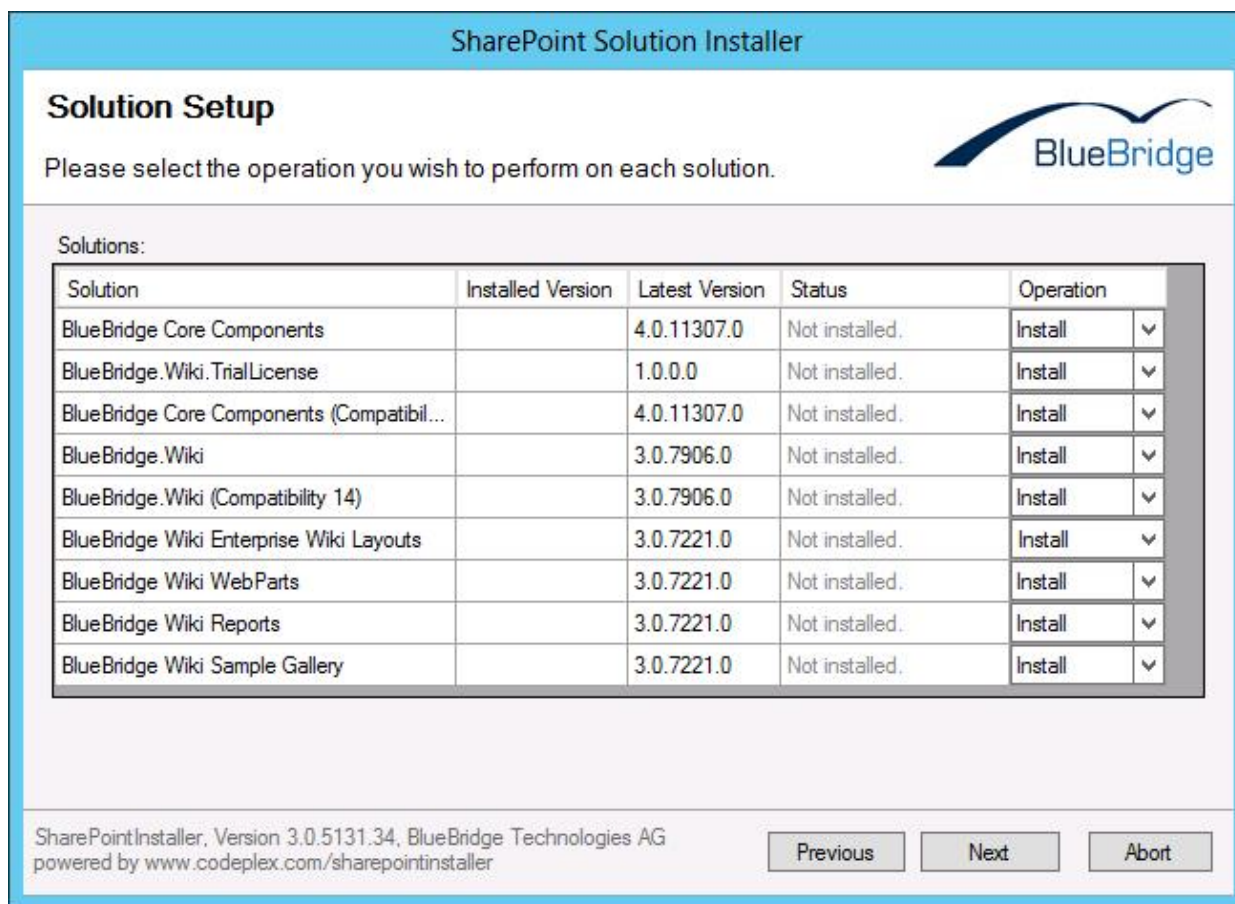


Click Next:



Click **Next** once all the tests have been carried out successfully and are displayed with a green flag.

Choose the Solutions to Install



Required Components

Install the solutions "BlueBridge Core Components" and "BlueBridge Wiki". If you are installing for the first time, you should also install the solution "BlueBridge.Wiki.TrialLicense". This automatically implements a 30 day trial license key. If you have already purchased a license key, you will not need to install this solution.

Compatibility Modules

If you are upgrading from SharePoint 2010 (see [these notes](#)) and used the Wiki Extensions on 2010, then you should also install the compatibility options:

- BlueBridge Core Components (Compatibility 14)
- BlueBridge Wiki (Compatibility 14)

If you did not use the Wiki Extensions on previous versions of SharePoint, you will not need to install these modules.

Optional Components

The other modules add extra features:

- BlueBridge Wiki Enterprise Wiki Layouts - if you are using the Enterprise Edition of SharePoint and want to use Enterprise Wikis, then these sample page layouts can be very helpful to help you set up your wikis. They come pre-configured to use the BlueBridge wiki webparts e.g. Navigation.
- BlueBridge Wiki Webparts - makes the BlueBridge Wiki Webparts available. This module is highly recommended.
- BlueBridge Wiki Reports - enables the Wiki Reports feature, allowing you to see a report for incoming and outgoing links within a wiki.
- BlueBridge Wiki Sample Gallery - this adds a site feature which allows you to insert gallery images (e.g. keyboard buttons) into wiki articles.

License Agreement



Review the terms of the end user license agreement and accept them before clicking Next.

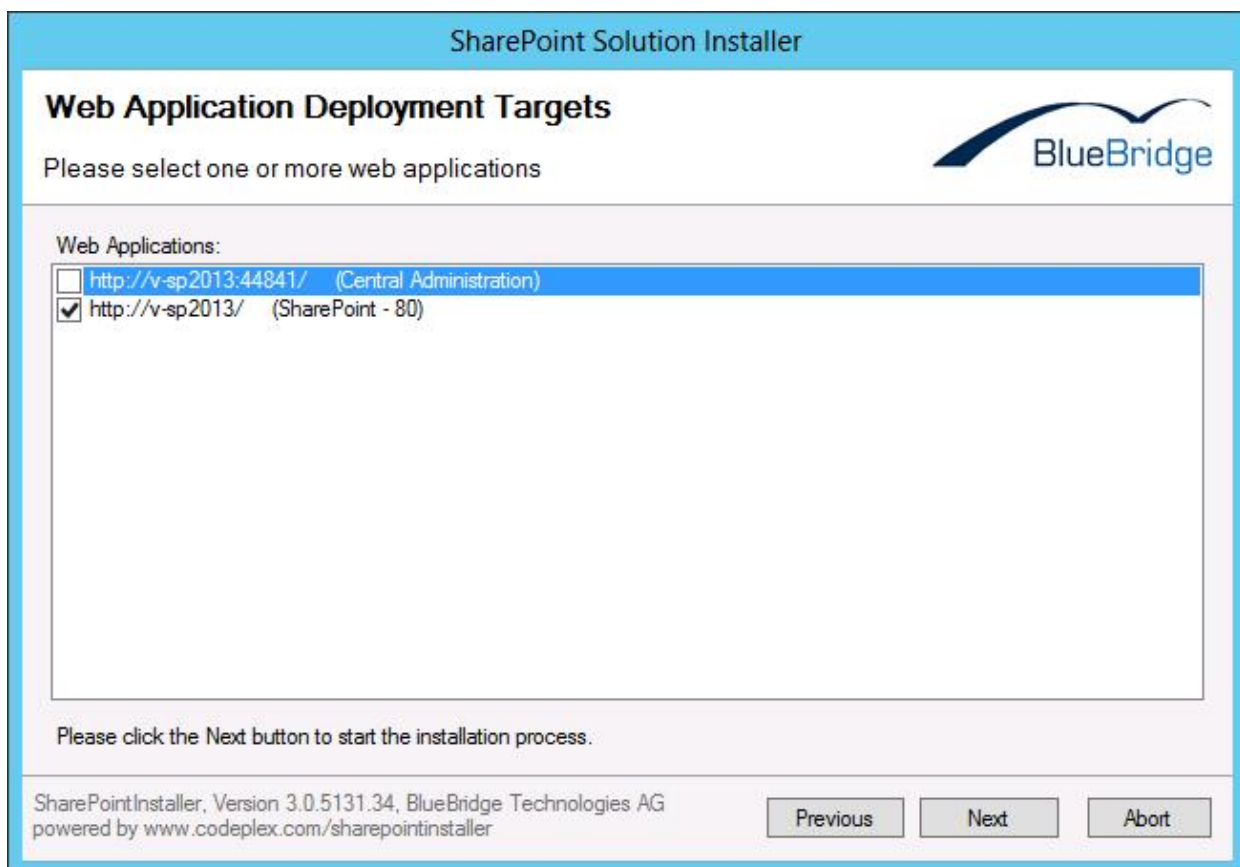
Where the Extensions should be Installed

The installation wizard checks all the available web applications on your server to see where the Extensions can be installed. In the example below, we have chosen to install the Extensions on our Portal Server (v-sp2013).

Note: By default you will find at least two web applications on your server:

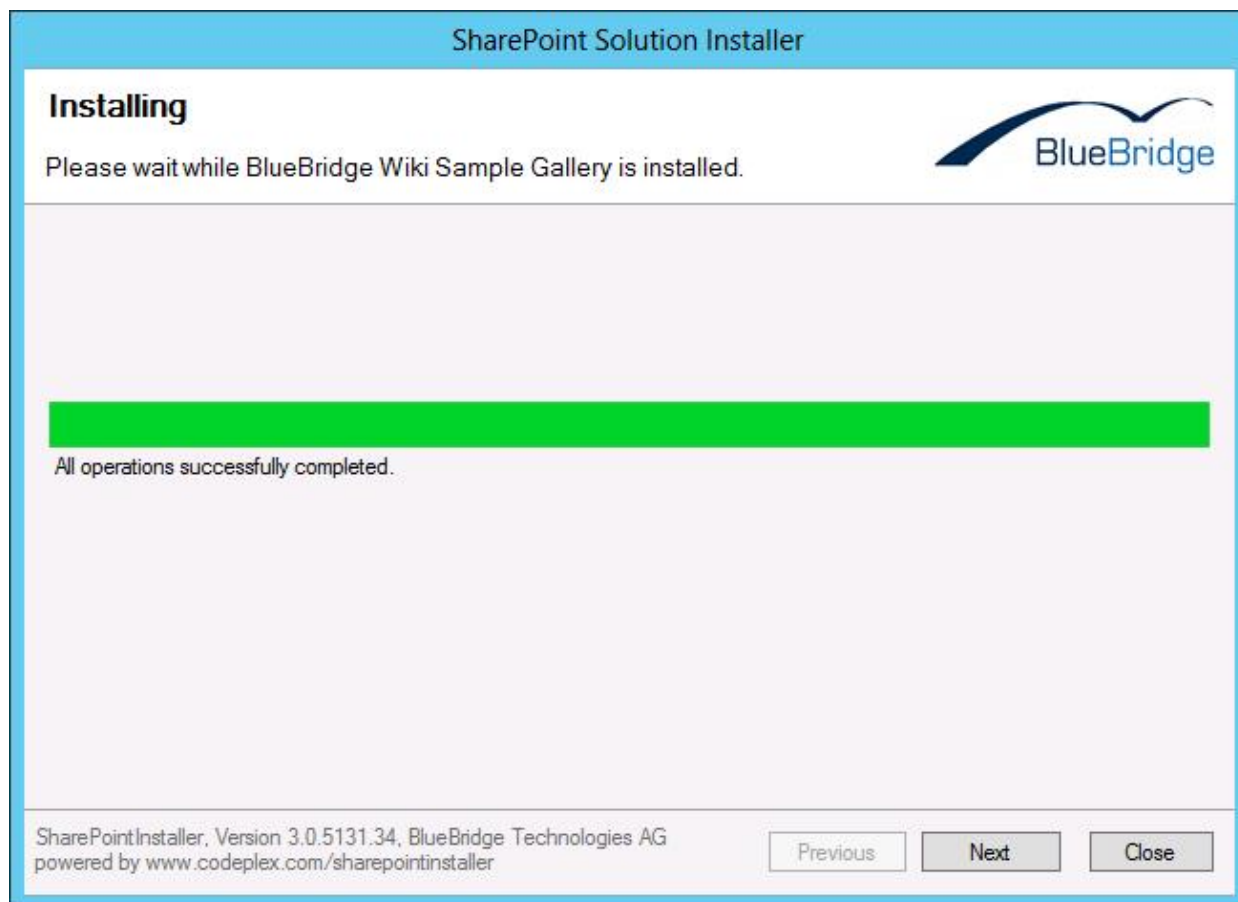
- Central Administration
- The web application for the SharePoint content sites (normally, this will be port 80 or the default web application).

Since the Wiki Extensions are not needed on the central administration, you will only have to install them on the content sites.

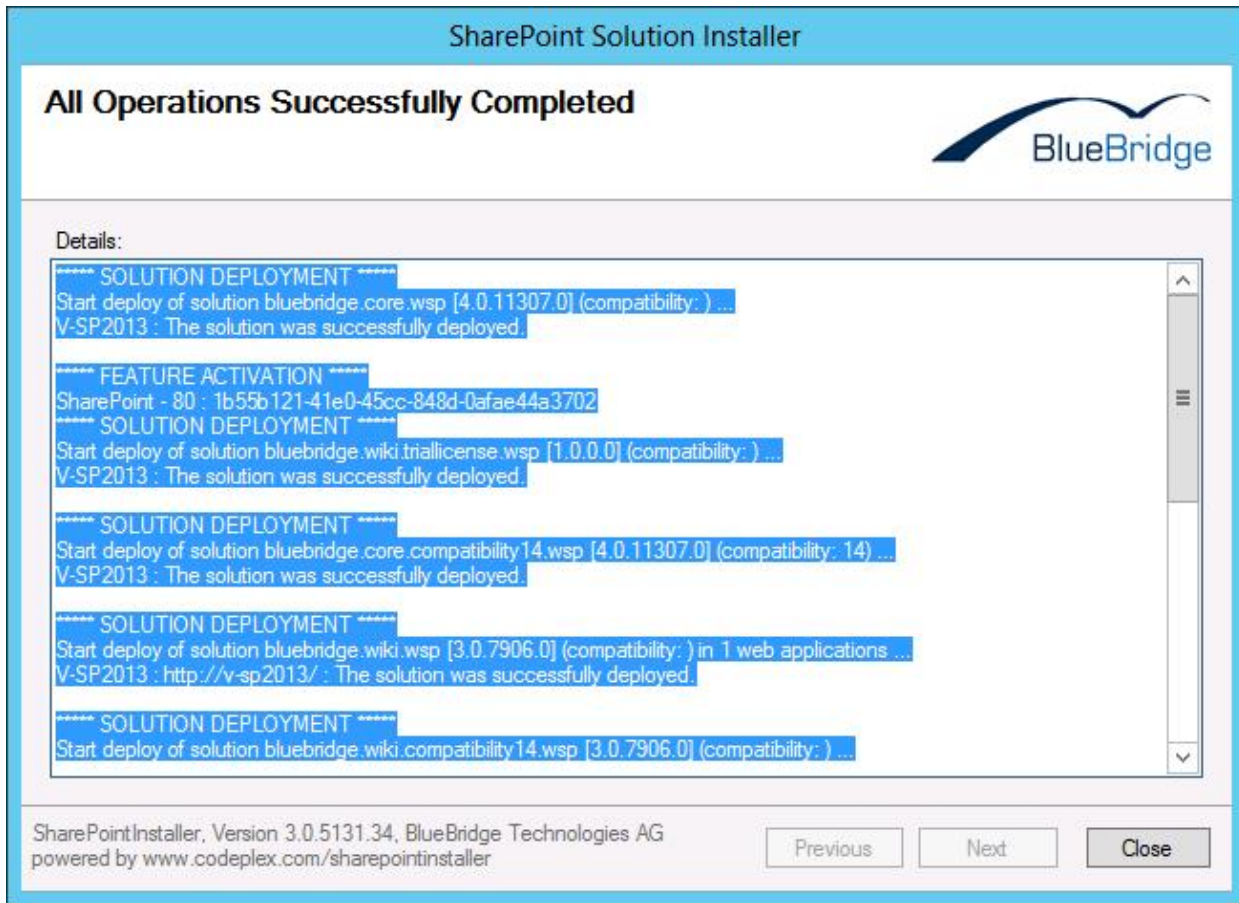


Finalising the Installation

Once you have selected the relevant web applications, the wizard will proceed to install the Wiki Extensions on your server.



Click **Next**.



If you see this next screen, then the Extensions have been installed successfully and you can close the wizard.

The next step is to install a valid License Key file to your server, assuming you did not install the trial license using the wizard.

2.3 Installation via PowerShell

Installation via PowerShell

These steps will help you install the Wiki Extensions manually using. It is not recommended that you do this unless you have experience with PowerShell, and in the majority of cases, the [Installation Wizard](#) will be sufficient for your needs.

Step 1: Installation Package

The first step is to download and unzip the installation package to your server. We recommend you copy the files into a directory that is easy to find, such as c:\install. You can always delete it later.

Open PowerShell to continue.

Step 2: Deploy BlueBridge.Core

Enter the following command in PowerShell:

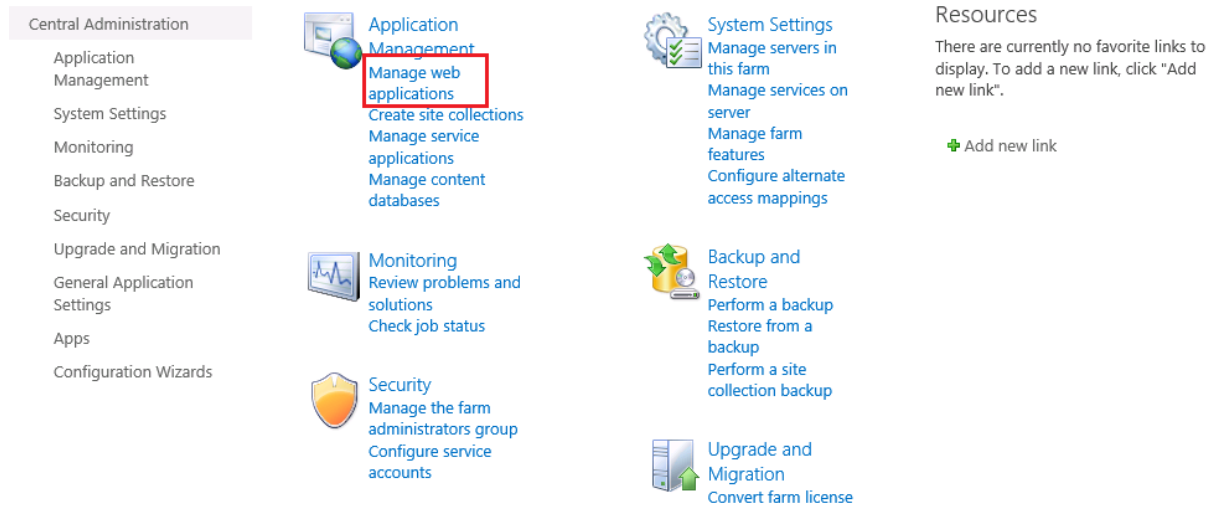
Add-SPSolution "C:\Install\BlueBridge.Core.wsp"

And then:

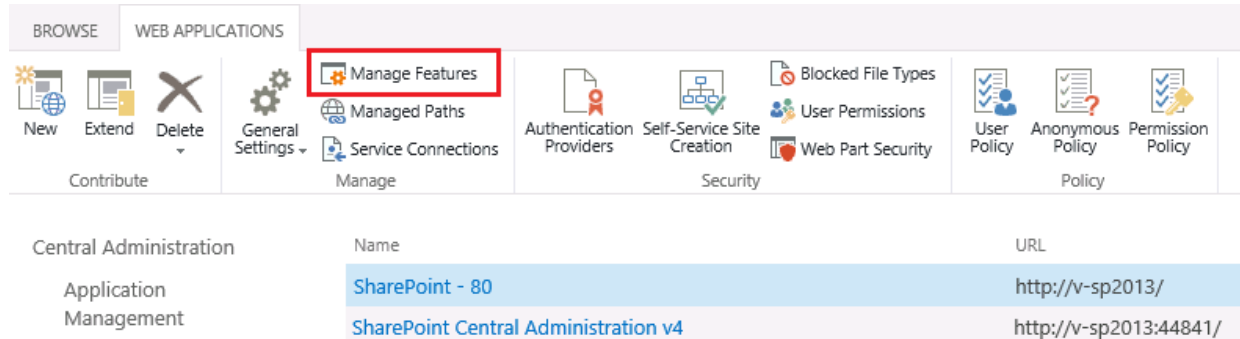
Install-SPSolution -Identity BlueBridge.Core.wsp -GACDeployment

Step 3: Activate BlueBridge Core

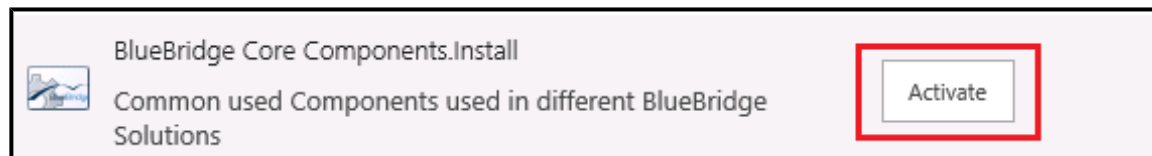
Navigate to the Central Administration and click on **Manage Web Applications**.



Now choose the relevant web application, which will be on Port 80 for most configurations. Next, click on **Manage Features** in the ribbon.



Finally, you can activate the Web Application Feature **BlueBridge Core Components.Install**.



In some configurations, you may have to reset the application pool at the stage or carry out an IISreset.

Step 4: Deploy other solutions

You can now repeat Step 2 for the other solutions (note that Step 3 is only relevant for BlueBridge Core). We recommend you start with BlueBridge.Wiki then move on to the others. Switch back to PowerShell and enter the following:

Add-SPSolution "C:\Install\BlueBridge.Wiki.wsp"

***Install-SPSolution -Identity BlueBridge.Wiki.wsp -WebApplication http://v-sp2013
-GACDeployment***

Note:

For BlueBridge.Wiki, you will have to enter the web application upon which it should be installed. In this case, the solution is being installed on http://v-sp2013. In your environment, this will of course be called something else.

For the other solutions, you will not have to enter the name of the web application; e.g.:

Add-SPSolution "C:\Install\BlueBridge.Wiki.Extras.Webparts.wsp"

Install-SPSolution -Identity BlueBridge.Wiki.Extras.Webparts.wsp -GACDeployment

Add-SPSolution "C:\Install\BlueBridge.Wiki.Sample.Gallery.wsp"

Install-SPSolution -Identity BlueBridge.Wiki.Sample.Gallery.wsp -GACDeployment

For details on the other solutions and which ones might be relevant for you, please see [Installation Wizard](#).

Step 5: Completing the installation

After completing the installation, you may have to perform an IISreset. Please also remember to install a [License Key](#) (either the trial license or a paid key).

We recommend checking the installation under "Manage Farm Solutions" of the Central Administration (in the group **System Settings**), to make sure that everything has been deployed successfully.

2.4 License Key

License Key

If you install the module BlueBridge.Wiki.Trial, then a trial license will automatically be generated and you can commence testing immediately. If you receive a separate license key from us (e.g. to extend your trial or after you have purchased), then you will need to install this manually.

Fixed-Term Trial Licenses

Ocasionally, we will issue you with a license file (*.lic) that will work up until a fixed date. In this case, you should copy the file to this location on your server(s):

Program Files\Common Files\Microsoft Shared\web server extensions\15\Licenses.

Purchased Licenses

However, in the majority of cases, you will receive a WSP file. This can be deployed as with any other SharePoint solution via PowerShell:

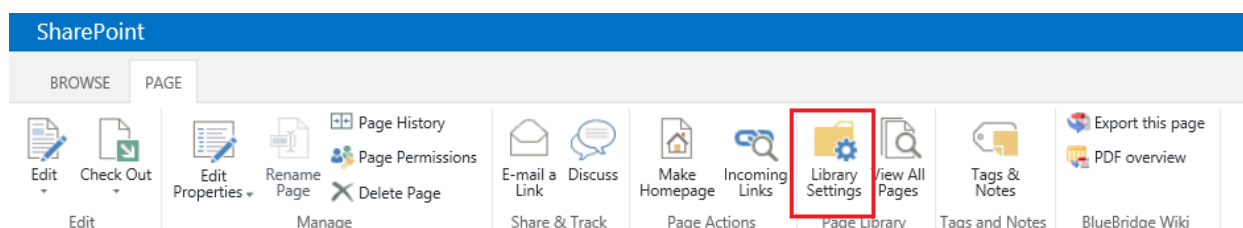
Add-SPSolution "C:\Install\BlueBridge.Wiki.License.XXX.wsp"

Install-SPSolution –Identity BlueBridge.Wiki.License.XXXwsp –WebApplication http://v-sp2013 –GACDeployment

In this case, the solution was originally copied to C:\Install and should be deployed to the web application http://v-sp2013. Note that the solution name will include your company name.

Checking License Status

You can check the status of your license at any time by clicking on the Wiki Settings. First, open up the library settings:



Then click on the item Wiki Settings (note that this only appears if the BlueBridge Wiki Extensions are installed and have been activated)

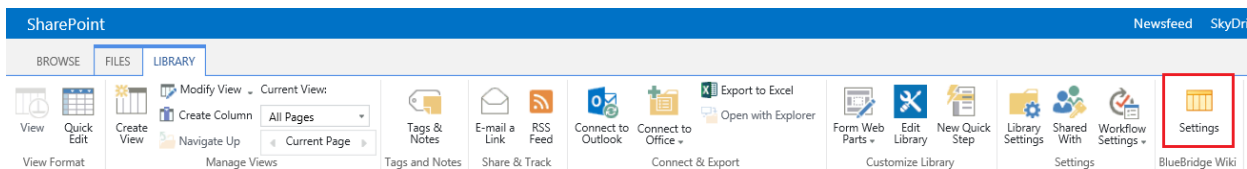
General Settings

- [List name, description and navigation](#)
- [Versioning settings](#)
- [Advanced settings](#)
- [Validation settings](#)
- [Column default value settings](#)
- [Audience targeting settings](#)
- [Wiki Settings](#)

Permissions and Management

- [Delete this document library](#)
- [Permissions for this document library](#)
- [Manage files which have no checked in version](#)
- [Workflow Settings](#)

Alternatively, you can navigate to the All Pages View and then select Wiki Settings directly from the ribbon:



Here, you can see the license information displayed just above the settings.

[Home](#)

Search this site

Wiki Settings

Version: 3.0.0.0. Revision: 3.0.7906.274 (Licensed)

License: [Licensed version](#)

Import

- [Add from Template](#)
- [Choose Template Lists](#)

Editing

- [Snippets Library](#)
- [Image Library](#)
- [Document Library](#)
- [Link List](#)
- [Discussion Board](#)
- [Editor Options](#)
- [Table Of Contents](#)

Helpers

- [Add Wiki Fields](#)
- [Auto Webparts](#)
- [Reference Folders](#)
- [Auto Linking](#)
- [LifeCycle](#)
- [Display Fields](#)

Export

- [Default Settings](#)

Administration

- [Wizard](#)

Click on the hyperlink to get more information.

[Home](#)

License

Trial TRIAL BlueBridge

2.5 Preparation for Import

Preparation for Import

The Wiki Extensions offer the functionality to save wiki libraries as templates. These can be re-used to help you create a number of different wiki libraries that all include an initial structure and content, which is especially useful for specifications. You can find more information on this in our [user manual](#).

By default, wiki libraries that are saved on the root site can be imported. By clicking on "Choose template lists" in the Wiki settings, you will be able to select these as import sources, and using the feature "Add from Template" then copies all the content from the source wiki to the currently selected wiki.

If you want to use wiki libraries from another location on the same server, as sources then you will have to configure this in the web.config.

Note that the user performing this action will need viewing permissions to access the source wiki, and that source wikis still need to be located on the same server as the target library (for security and authentication reasons).

If you want to add content from other sources such as Microsoft Word, then please contact us as we may be able to help.

Mark existing libraries as templates

You will need to add two sections to your web.config. Assuming you are using Port 80, the web.config can be found at **C:\inetpub\wwwroot\wss\VirtualDirectories\Default80**. As with all changes to the web.config, we strongly recommend creating a backup copy of the web.config before you change anything.

Note that no changes will be made to the existing libraries by modifying the web.config. All you are doing is telling SharePoint that it can use those libraries for the import feature in the BlueBridge Wiki Extensions.

The first addition should be made at the start of the web.config. Add the text in **bold** (the rest should already be there):

```
<?xml version="1.0" encoding="UTF-8" standalone="yes"?>
<configuration>
  <configSections>

    <sectionGroup name="BlueBridge.Wiki">
      <section name="WikiTemplates"
type="BlueBridge.SharePointExtensions.Galleries.GalleryConfigurationSection,BlueB
ridge.Spex.Utils, Version=4.0.0.0, Culture=Neutral,
PublicKeyToken=8ad6826c1afbd920" />
    </sectionGroup>
```

After this, you may find other sections listed. Please do not change any of these. At the end of the sections, you will find this tag:

```
</configSections>
```

Then scroll to the bottom of the web.config file and add the following just before the last **<configuration>** tag:

```
<BlueBridge.Wiki>
  <WikiTemplates defaultGallery="localwiki" >
    <add name=" project-small " title=" Project Small " type="Server" url="
http://sharepointserver/sites/wikitemplates " list=" ProjectSpecificationSmall "/>
    <add name=" project-large " title=" Project Large " type="Server" url="
http://sharepointserver/sites/wikitemplates " list=" ProjectSpecificationLarge "/>
  </WikiTemplates>
</BlueBridge.Wiki>

</configuration>
```

You should then edit the highlighted elements as described below.

In this case, we have two libraries that should be used as wiki templates. The first is marked yellow and is designed for smaller project specifications, while the second is marked in green and is a template for larger projects (e.g. that have to conform to a certain methodology). You can of course define more templates by simply copying the content of `<add name/>` and making sure that these are added above the `</WikiTemplates>` closing tag.

You can change the highlighted tags as follows:

```
<add name="<i>internal name</i>" title="<i>display name in template list</i>" type="Server"
url="<i>url of the template site</i>" list="<i>name of wiki library</i>"/>
```

Here is another example of web.config entries:

```
<add name="project-de" title="Project1-german" type="Server"
url="http://v-sp2013/teamsite-de" list="wikibibliothek"/>
<add name="project-en" title="Project2-english" type="Server"
url="http://v-sp2013/teamsite1" list="wikilibrary"/>
```

In this example, there is a German template which can be found on a teamsite called "teamsite-de". The wiki library is called "wikibibliothek". The English template comes from a wiki library called "wikilibrary" which is found on "teamsite1".

Note that only the site should be given in the field "url" and not the name of the wiki library. The name of the library should be included under "list". If you use Copy & Paste to enter the URL of the site, then remember to delete the last "/" from the URL, as well as any final pages such as "default.aspx".

Choose Template Lists

As described in the user manual, you can now choose these templates as source wikis for importing content:

Add wiki entries from template ⓘ

Choose a template

Configuration templates

Small Project

Large Project

Templates that have been added through changes to the web.config (as described above) will be listed under "Configuration Templates". Templates that have automatically been added to this list because they are on the root site (no changes to the web.config are necessary here) can be found under "List Templates."

Note:

- Due to authentication issues, the wiki template libraries must be on the same server.
- When importing a list, only the pages are imported (and not the list itself). This means that the language of the source and target libraries is irrelevant, so you can e.g. import German pages into an English wiki library.
- The user who imports the pages must have at least viewing privileges for the wiki template libraries.

2.6 Adding your Logo to Exports

Adding your logo to exports

One of the key advantages in using the Wiki Extensions is the ability to export your wiki libraries as PDF files, allowing you to generate documents quickly to pass on to customers, employees and partners. To improve the professionalism of these documents, we recommend using an XSL Transformation, which will ensure that Corporate Guidelines are adhered to throughout the document. As the programming of XSLTs can be complicated, we would be happy to assist you in doing this.

One quick and easy way of improving the look and feel of your export documents without programming knowledge is to add your company logo to the first page of the export.

Simply rename your logo as “logo.png” and copy it to this directory on the SharePoint server:

Program Files\Common Files\Microsoft Shared\Microsoft Shared\web server extensions\15\TEMPLATE\LAYOUTS\BlueBridge.Wiki\export

We recommend saving the logo with a resolution of 110 dpi because this is the format that Adobe Reader 9 uses by default. If you save the image in a different resolution, Adobe Reader may rescale the image, resulting in a loss of sharpness in your image. Alternatively, you can change the preferences in Adobe Reader to use e.g. the system setting of 96dpi. Remember, however, that this would require a change on the client's machine, which would only apply to that machine.

The file should be no more than 47px in height.

2.7 Wiki Webparts

Wiki Webparts

In case the webparts are not added automatically, you can install them manually.

You can find the DWP files [here](#).

The following webparts are available:

- Navigation
- Related Documents
- Related Links

Please note that you may have to add relevant safe controls in your web.config.

3. Upgrade

Upgrade

If you have already installed the BlueBridge Wiki Extensions for SharePoint 2013 and want to upgrade to a newer version of the Wiki Extensions, then please read [these notes](#).

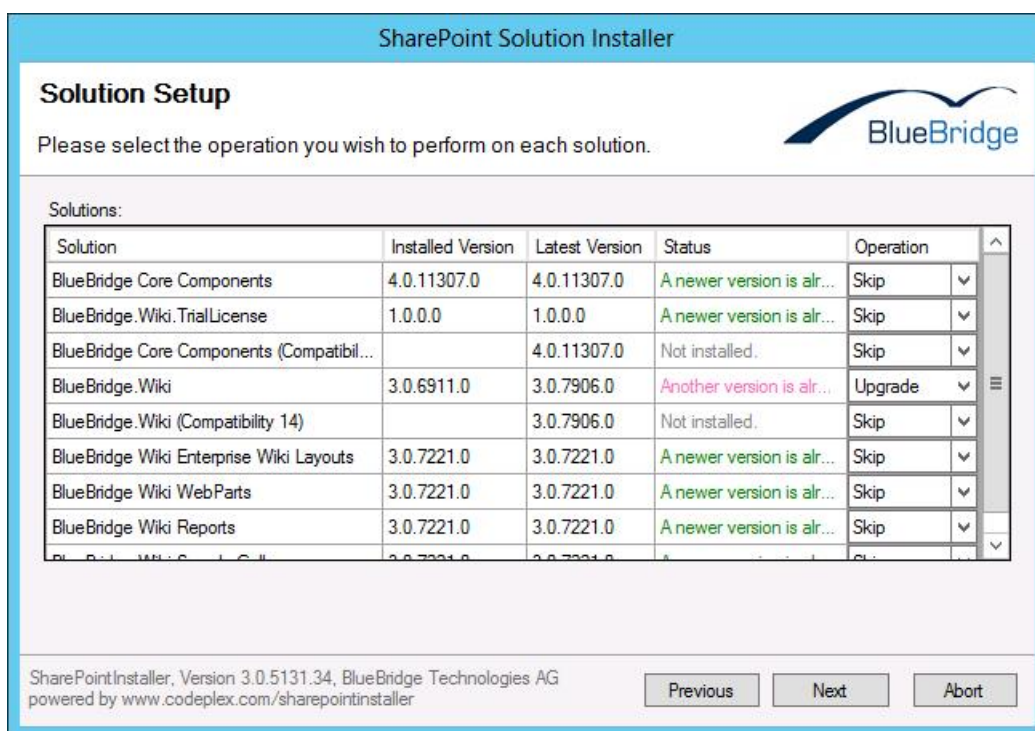
If you are using the Wiki Extensions on a previous version of SharePoint and want to migrate to SharePoint 2013, then please read [this information](#).

3.1 Upgrade Solution

Upgrade

Note that this article refers to upgrading an existing wiki solution on your SharePoint 2013 server. Please click [here](#) for more information on upgrading from a previous SharePoint version.

If you already have a previous version installed, the installer will prompt you for the next appropriate action:



Depending on your system the follow operations may be available:

Install: The solution is installed (beause it has not yet been installed).

Upgrade: The solution is upgraded without reinstallation.

Repair: The solution is retracted from the solution store (uninstalled) and installed again.

3.2 Upgrading to SP 2013

Upgrading from Previous Versions

This article should help you understand how to migrate wikis to SharePoint 2013.

Standard Wikis / Enterprise Wikis

Before discussing migration, it is important to understand the difference between Enterprise Wikis and Standard Wikis. Although many of the features are the same, they are based on different technologies that are not compatible with each other. This means that it is not possible to migrate a standard wiki to an enterprise wiki or vice versa.

SharePoint 2007 only supported standard wikis, while SharePoint 2010 and 2013 support both types. You will, however, need Enterprise licenses in order to use Enterprise Wikis.

If you are upgrading from SharePoint 2007, then you will first have to migrate to 2010 and then to 2013. Your wikis will stay as standard wikis.

If you are upgrading from SharePoint 2010, then you may already have Enterprise Wikis. In this case, these will be migrated to Enterprise Wikis in 2013, and the standard wikis will be migrated to standard wikis in SharePoint 2013.

Content

Generally speaking, wiki content is stored as HTML. The Wiki Extensions do not change this, and no extra content types are required. Even if the Wiki Extensions are not installed on the target system, then the content itself should still be migrated.

Some of the features in the BlueBridge Wiki Extensions use JavaScript, however, which you should bear in mind when migrating to SharePoint 2013. Features such as the table of contents, lightbox and zoom will therefore only work on SharePoint 2013 if the BlueBridge Wiki Extensions for SharePoint 2013 have been installed.

There is a possibility that some content will be displayed slightly differently on SharePoint 2013, especially if migrating from 2007 (with or without the Wiki Extensions). This is due to the fact that a different editor is being used, which may render certain HTML tags in a different way. There is always a risk of this when moving from one editor to another and is of course one of the reasons that Microsoft allows you to update the user interface separately. Unfortunately, we are therefore not able to guarantee that content will be displayed in the same way after migration. Having said that, we do not expect there to be drastic differences.

Compatibility Modules

If you are using sites that were migrated from a previous version of SharePoint, please make sure you install the compatibility modules for the Wiki Extensions:

- BlueBridge Core Components (Compatibility 14)
- BlueBridge Wiki (Compatibility 14)

You can install these using the [Installation Wizard](#).

If you have any questions about SharePoint 2013, migration or the BlueBridge Wiki Extensions, then please do not hesitate to [contact](#) us.

4. Uninstalling

Uninstalling

During the installation process a number of SharePoint solutions are installed on your server. To remove these solution you can either start “setup.exe” again and remove the solution using the wizard, or you can also remove the solutions directly in the SharePoint Central Administration or via PowerShell.

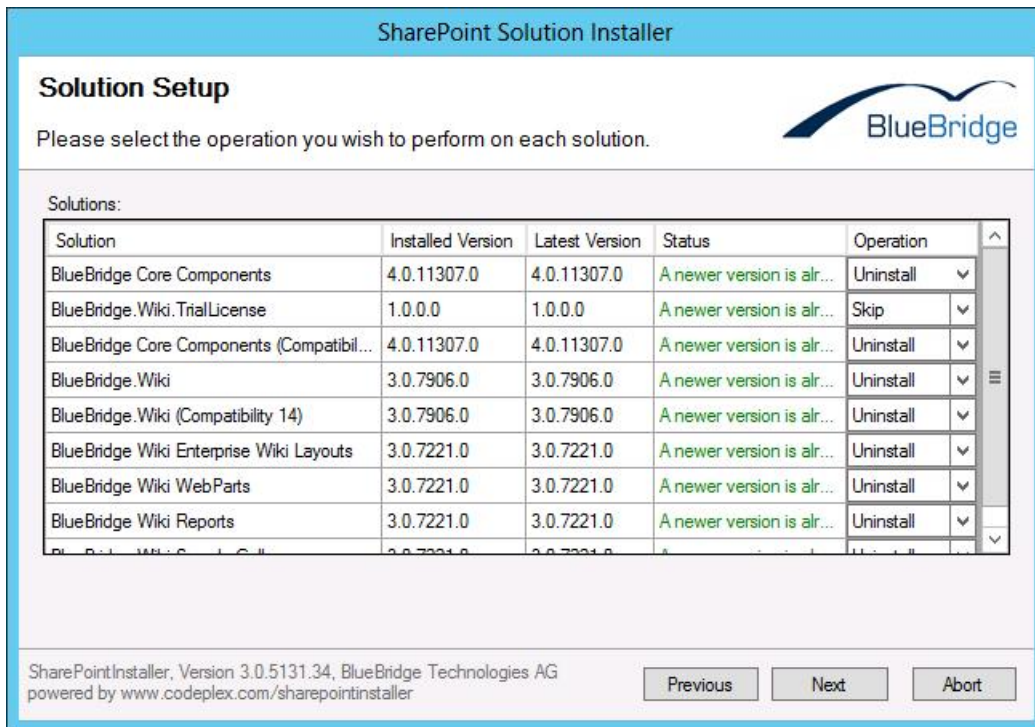
Please note that BlueBridge.Core is also required for other solutions from BlueBridge Technologies AG. Removing it will cause these to cease functioning.

If you want to remove all the modules, we suggest you remove the optional modules first (like the Galleries), then the Wiki Extensions themselves and finally BlueBridge.Core.

4.1 Using the Wizard

Uninstalling using the Wizard

To uninstall the BlueBridge Wiki Extensions with the wizard, start "setup.exe" again. Choose **Uninstall** to remove the solutions.



The wizard will automatically uninstall the solutions in the right order.

Note:

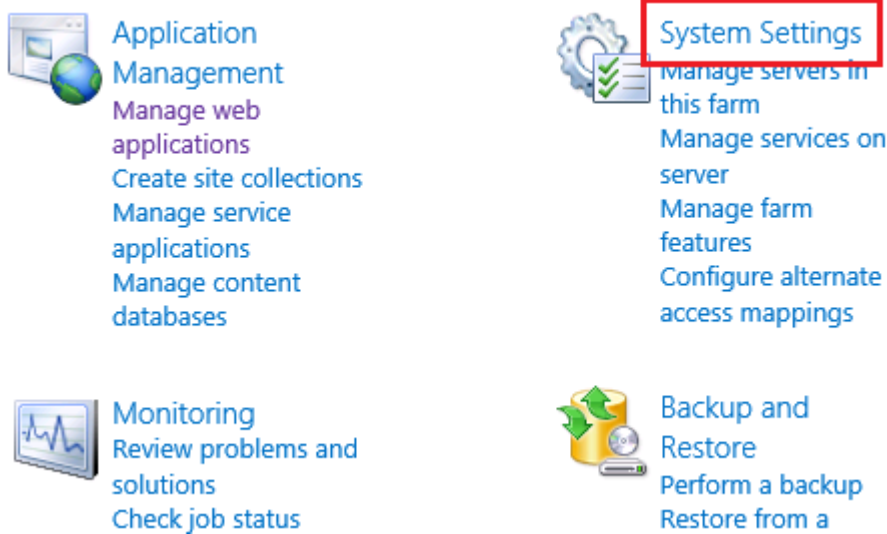
Be careful when uninstalling "BlueBridge.Core", since this solution is required by several solutions provided by BlueBridge Technologies AG (not just the Wiki Extensions).

4.2 Using the Central Administration

Uninstalling using the Central Administration

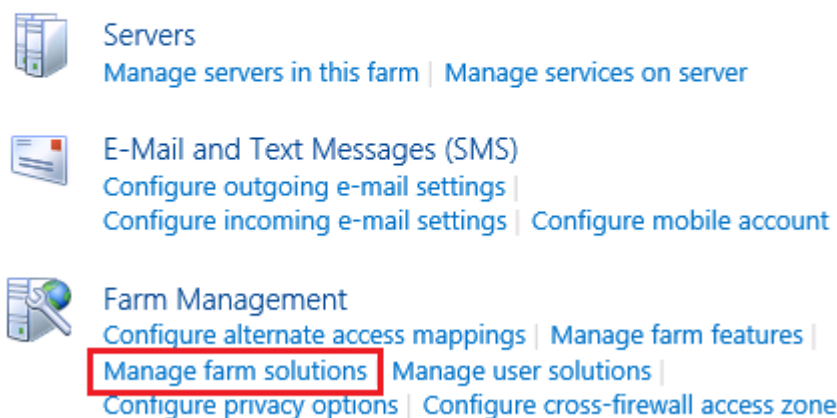
To remove the Wiki Extensions using the Central Administration, please follow these steps:

Open SharePoint Central Administration and navigate to the **System Settings**.



Then click on **Manage Farm Solutions**:

System Settings



Select Solutions

You will now see a list of the installed solutions. Click on each of the WSP files to continue:

Important note:

Make sure that you uninstall BlueBridge.Core last. You should also only uninstall this module if you are not using any other software from BlueBridge Technologies AG, as this module is needed for our other solutions. We also recommend that you uninstall BlueBridge.Wiki towards the end (just before BlueBridge.Core).

Solution Management ⓘ

Name	Status	Deployed To
bluebridge.core.compatibility14.wsp	Deployed	Globally deployed.
bluebridge.core.wsp	Deployed	Globally deployed.
bluebridge.wiki.compatibility14.wsp	Deployed	Globally deployed.
bluebridge.wiki.extras.enterprisewikilayouts.wsp	Deployed	Globally deployed.
bluebridge.wiki.extras.webparts.wsp	Deployed	Globally deployed.
bluebridge.wiki.reports.wsp	Deployed	Globally deployed.
bluebridge.wiki.sample.gallery.wsp	Deployed	Globally deployed.
bluebridge.wiki.triallicense.wsp	Deployed	Globally deployed.
bluebridge.wiki.wsp	Deployed	http://v-sp2013/

The following screenshots refer to the module BlueBridge.Wiki.wsp.

Retract Solution

Click on the module that should be uninstalled (see above for the correct order) and then select **Retract Solution**:

Solution Properties

Deploy Solution **Retract Solution** [Back to Solutions](#)

Name:	bluebridge.wiki.wsp
Type:	Core Solution
Contains Web Application Resource:	Yes
Contains Global Assembly:	Yes
Contains Code Access Security Policy:	No
Deployment Server Type:	Front-end Web server
Deployment Status:	Deployed
Deployed To:	http://v-sp2013/
Last Operation Result:	The solution was successfully deployed.
Last Operation Details:	V-SP2013 : http://v-sp2013/ : The solution was successfully deployed.
Last Operation Time:	1/6/2014 4:49 PM

Retracting the solution from the solution store will deactivate the solution on all sites and prevent site owners from re-activating it, but the solution itself remains on the server. The next step is to remove the solution completely from the server.

Remove Solution

After being retracted, the solutions can be removed completely by clicking on **Remove Solution**:

Retract Solution i

Solution Information

Information on the solution you have chosen to retract.

Name:	bluebridge.wiki.wsp
Locale:	0
Deployed To:	http://v-sp2013/
Deployment Status:	Deployed

Retract When?

A timer job is created to retract this solution. Please specify the time at which you want this solution to be retracted.

Choose when to retract the solution:

Now
 At a specified time:

Retract From?

The solution contains Web application scoped resources and should be retracted from specific Web applications. Please choose the Web application where you want the solution to be retracted from.

Choose a Web application to retract this solution:

Repeat this process as described above for the other solutions. Note that it makes no difference as to whether you retract and remove the first solution, and then retract and remove the second solution; or if you retract all solutions and then remove all solutions. You should, however, still observe the order of operations as given above and make sure that you only retract BlueBridge.Core once all other modules from BlueBridge have been retracted.

5. Activation

Activating the Wiki Extensions

After you have installed the Wiki Extensions, you will have to activate them on the relevant SharePoint sites.

There are a number of features that you can activate:

[Activating the Site Features](#)

[Activating the Site Collection Features](#)

5.1 Site Features

Site Features

To provide you with maximum flexibility, you can choose which sites you would like to use the Wiki Extensions on, and also activate additional functionality for specific sites.

To activate the site features on a site/workspace, navigate to the **Site Settings** and click on **Manage Site Features**.

[Home](#)

Site Settings

Users and Permissions

- [People and groups](#)
- [Site permissions](#)
- [Site app permissions](#)
- [View user permissions \(with the search by url\)](#)

Web Designer Galleries

- [Site columns](#)
- [Site content types](#)
- [Master pages](#)
- [Composed looks](#)

Site Administration

- [Regional settings](#)
- [Language settings](#)
- [Site libraries and lists](#)
- [User alerts](#)
- [RSS](#)
- [Sites and workspaces](#)
- [Workflow settings](#)

Look and Feel

- [Title, description, and logo](#)
- [Quick launch](#)
- [Top link bar](#)
- [Tree view](#)
- [Change the look](#)

Site Actions

- [Manage site features](#)
- [Save site as template](#)
- [Enable search configuration export](#)
- [Site Web Analytics reports](#)
- [Reset to site definition](#)
- [Delete this site](#)

Site Collection Administration

- [Go to top level site settings](#)

Then activate the relevant features:




BlueBridge Wiki Extensions - this contains the main functionality of the BlueBridge Wiki Extensions. This should be activated before the other features.

BlueBridge Sample Ribbon Galleries - adds image galleries e.g. for keyboard buttons.

BlueBridge Wiki Reports - Provides information on incoming and outgoing links.

[Home](#)

Site Settings ▸ Site Features

Name	Status
 BlueBridge Sample Ribbon Galleries Adds the BlueBridge sample galleries to the ribbon	<input type="button" value="Deactivate"/> <input checked="" type="button" value="Active"/>
 BlueBridge Wiki Extensions Adds Export, Import and Navigation to your wiki	<input type="button" value="Deactivate"/> <input checked="" type="button" value="Active"/>
 BlueBridge Wiki Reports Adds several reports to bluebridge wiki	<input type="button" value="Deactivate"/> <input checked="" type="button" value="Active"/>

Of course the features can be deactivated at a later stage by the same method.

5.2 Site Collection Features

Activating the Site Collection Features

There are two site collection features, and their activation is optional.

- Wiki Fields - Although not required for the use of the PDF export function, it creates two new attributes for the wiki articles, making it easier to sort and manage your information. It is also used for the [navigation webpart](#).
- Wiki Webparts - These provide additional webparts (e.g. for navigation)

To activate this site collection features, navigate to the **site settings**. If you are not already on the top level site, then click on the option in the right-hand column to manage the top level site collection features.

[Home](#)

Site Settings

Users and Permissions

- [People and groups](#)
- [Site permissions](#)
- [Site app permissions](#)
- [View user permissions \(with the search by url\)](#)

Web Designer Galleries

- [Site columns](#)
- [Site content types](#)
- [Master pages](#)
- [Composed looks](#)

Site Administration

- [Regional settings](#)
- [Language settings](#)
- [Site libraries and lists](#)
- [User alerts](#)
- [RSS](#)
- [Sites and workspaces](#)
- [Workflow settings](#)

Look and Feel

- [Title, description, and logo](#)
- [Quick launch](#)
- [Top link bar](#)
- [Tree view](#)
- [Change the look](#)

Site Actions

- [Manage site features](#)
- [Save site as template](#)
- [Enable search configuration export](#)
- [Site Web Analytics reports](#)
- [Reset to site definition](#)
- [Delete this site](#)

Site Collection Administration

- [Go to top level site settings](#)

Click on **site collection features**.

- Site Administration
- Regional settings
- Language settings
- Site libraries and lists
- User alerts
- RSS
- Sites and workspaces
- Workflow settings



- Search
- Result Sources
- Result Types
- Query Rules
- Schema
- Search Settings
- Search and offline availability
- Configuration Import

- Site Collection Administration
- Recycle bin
- Search Result Sources
- Search Result Types
- Search Query Rules
- Search Schema
- Search Settings
- Search Configuration Import
- Search Configuration Export
- Site collection features
- Site hierarchy
- Site collection audit settings
- Portal site connection
- Storage Metrics
- Site collection app permissions
- Help settings
- SharePoint Designer Settings
- HTML Field Security
- Site collection health checks

You can now activate the relevant features:

[Home](#)

Site Settings ▸ Site Collection Features

Name	Status
 BlueBridge Wiki Fields Adds chapter fields to your wiki	<input type="button" value="Deactivate"/> <input checked="" type="button" value="Active"/>
 BlueBridge Wiki WebParts Adds Wiki Webparts to include in sitecollection	<input type="button" value="Deactivate"/> <input checked="" type="button" value="Active"/>

Please note that you will still have to add the wiki fields to the libraries you want to use them in. This is done through the BlueBridge Wiki Settings of the wiki library, and is explained in more detail in the [User Manual](#). The webparts can be added either manually or by using the Auto Webparts feature.

6. Help and Support

Help and Support

Thank you for reading this installation guide. You should have now installed and activated the Wiki Extensions.

For more information on how to use these in your organisation, please refer to the User Guide.

Should you have any questions, please do not hesitate to contact our team at info@bluebridge.de.

6.1 Release Notes

Release Notes

To view the release notes for the BlueBridge Wiki Extensions, please open up the installation folder and locate the file BlueBridge.Wiki.html.

Scroll down in this document to find the Release History:

Release History

Version	Date
3.0.7906	2013-09-06
3.0.7902	2013-09-02
3.0.7828	2013-08-28
3.0.7816	2013-08-16
3.0.7726	2013-07-26
3.0.7725	2013-07-25

By clicking on the Release Number, you can then find more information on the new features/fixes in that version.